

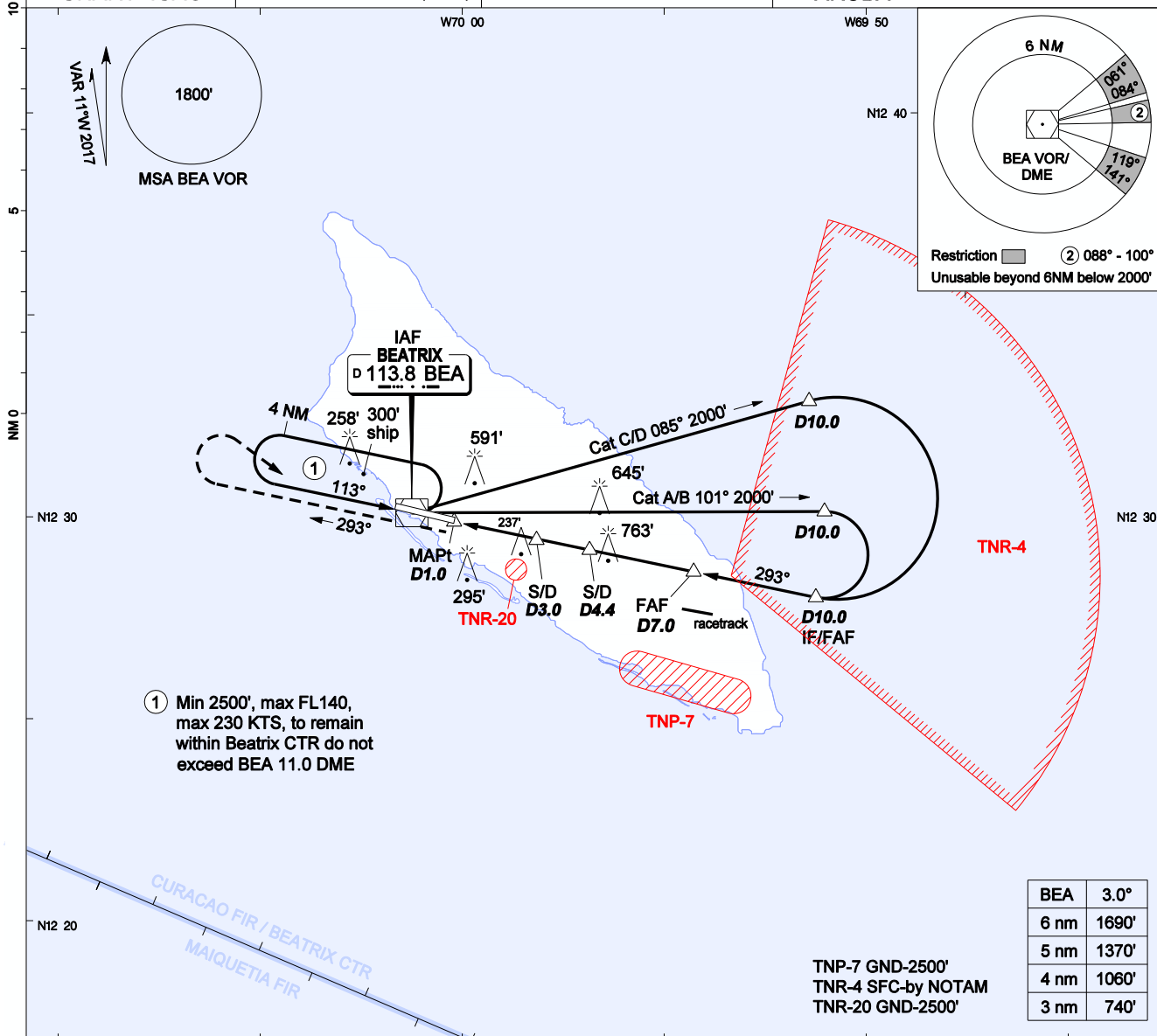
AIP DUTCH CARIBBEAN

**INSTRUMENT
APPROACH
CHART- ICAO**

AD ELEVATION: 62'
TRANS LEVEL: FL 40
TRANS ALT: 2500' (2438')

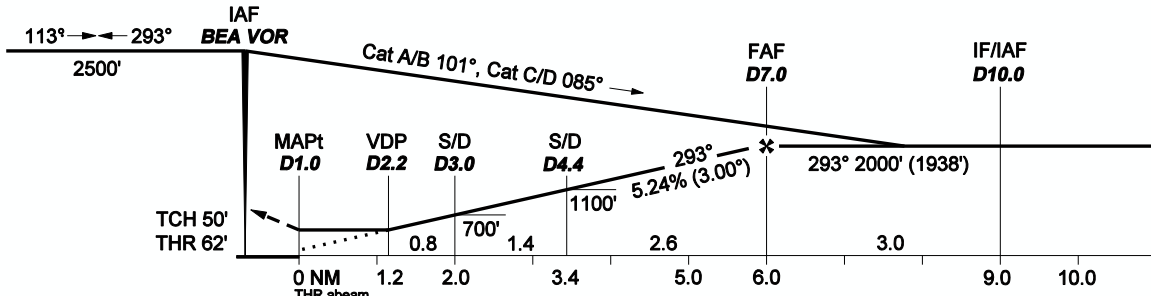
BEATRIX:
APP/TWR 120.9 GND 118.0
APRON 121.6 ATIS 132.1

**VOR Y RWY 29
REINA BEATRIX INT'L (TNCA)
ARUBA**



① Min 2500', max FL140, max 230 KTS, to remain within Beatrix CTR do not exceed BEA 11.0 DME

MISSED APPR: Climb on BEA R-293 outbound to 1500', then turn right climbing to 2500' in hold, or as directed by ATC.



OCA(H)	A	B	C	D	GROUNDSPEED - DESCENT RATE						
					KNOTS	70	90	100	120	140	160
STRAIGHT-IN	490' (428')	490' (428')	490' (428')	490' (428')	FT/MIN	372	478	531	637	743	849
CIRCLING	890' (828')	890' (828')	1160' (1098')	1160' (1098')							

CHANGES: Mag var date.

- TNR-4 is not active during Rwy 29 operations.
- Bearings are magnetic. Altitudes, elevation and heights in feet and distance in NM.
- Heights are relative to AD elevation.
- Visual descent point (VDP) is where straight-in OCA intersects 3° descent slope.

MAPt D1.0 (abeam THR)	N12 29 52.68	W070 00 11.90
VDP	N12 29 37.80	W069 59 00.69
S/D D3.0	N12 29 28.21	W069 58 14.81
S/D D4.4	N12 29 10.65	W069 56 50.82
FAF D7.0 (42,394')	N12 28 38.30	W069 54 16.22
D10.0 R-085	N12 32 51.76	W069 51 25.07
D10.0 R-101	N12 30 05.63	W069 51 01.42
D10.0 R-113	N12 28 00.33	W069 51 14.90